

2015 CONFERENCE ON CANADIAN STEWARDSHIP

# UNDER THE BIG TOP

RCA WASTE REDUCTION CONFERENCE

Three Ring Circus  
How EPR Impacts Our Business

September 30<sup>th</sup>, 2015

---



**GREEN**  
by Nature EPR<sup>®</sup>



# The Balancing Act

***“A Collector and Processor”***



**Cascades Recovery Inc.**



***“A Supply Chain Manager”***



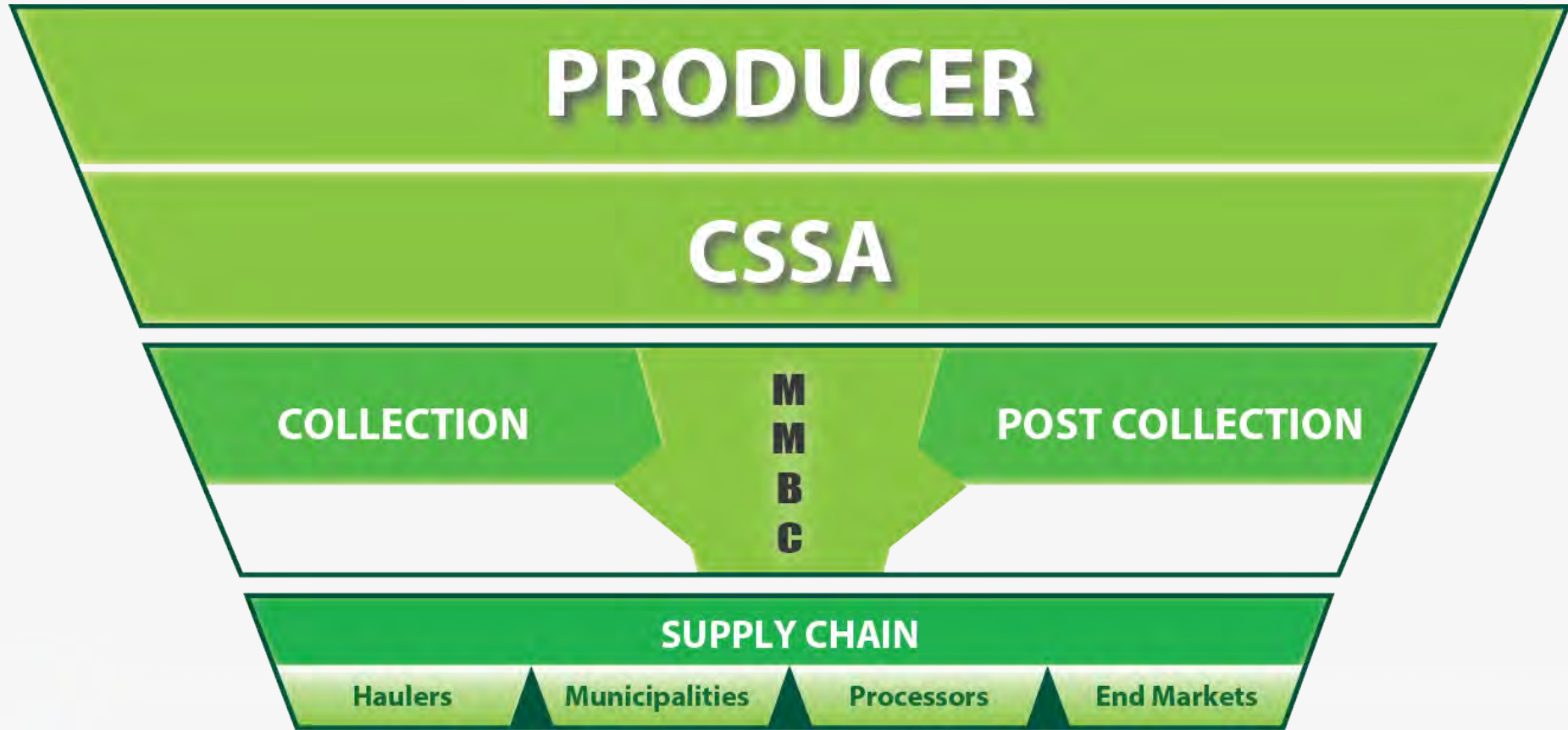
**GREEN  
by Nature EPR®**

# The Cascades Family



**GREEN**  
by Nature EPR®

# Under the EPR Big Top in British Columbia



# A NEW Act - Green by Nature EPR

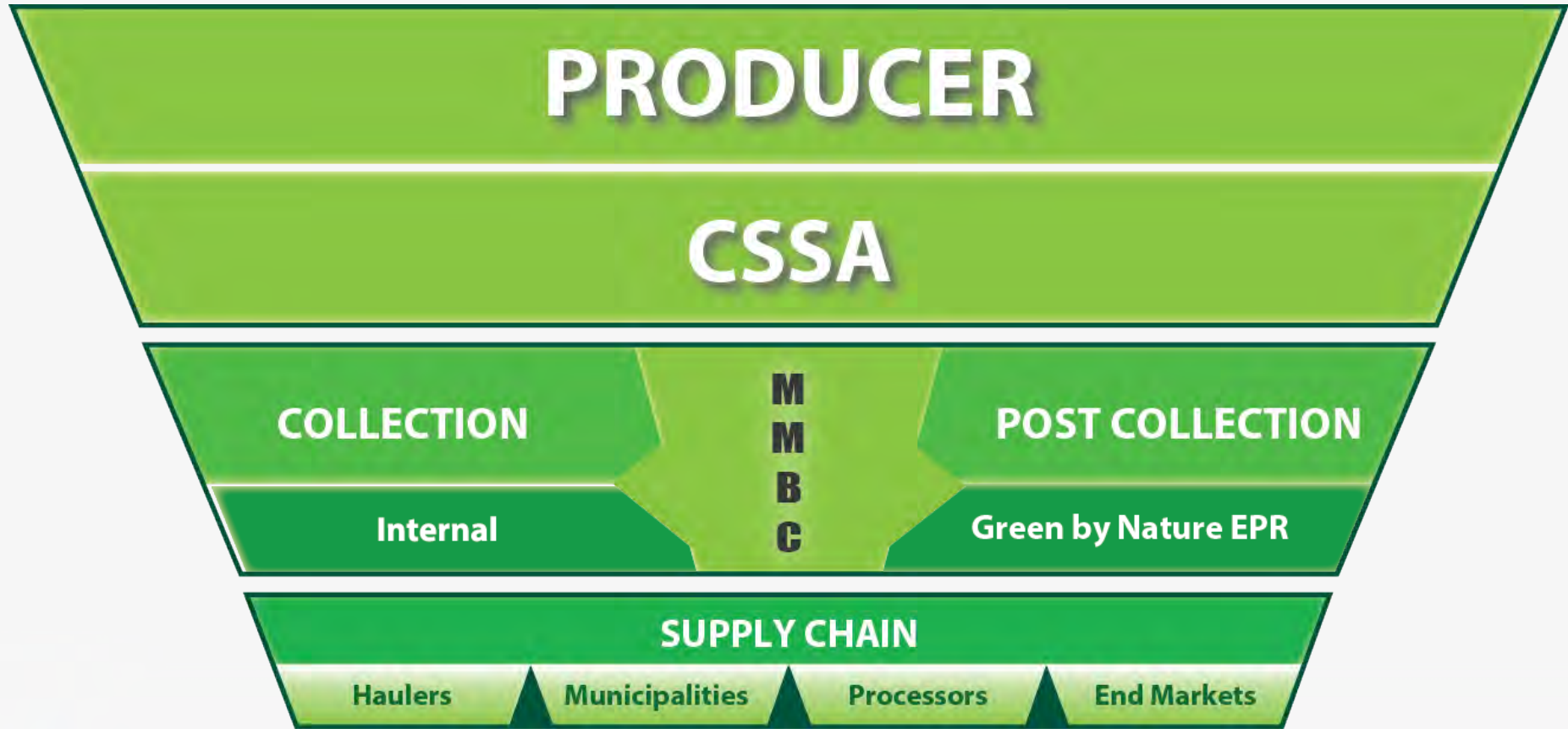


## GREEN by Nature EPR<sup>®</sup>

- Create a recovery environment that is motivated to find ***positive end of life*** solutions for all PPP
- Provide a low cost, sensible solution that works for the industry AND is ***acceptable to Producers***
- Rationalize the entire supply chain focusing on removing ***unnecessary redundancy***
- Develop a system that can be ***easily implemented*** in other jurisdictions

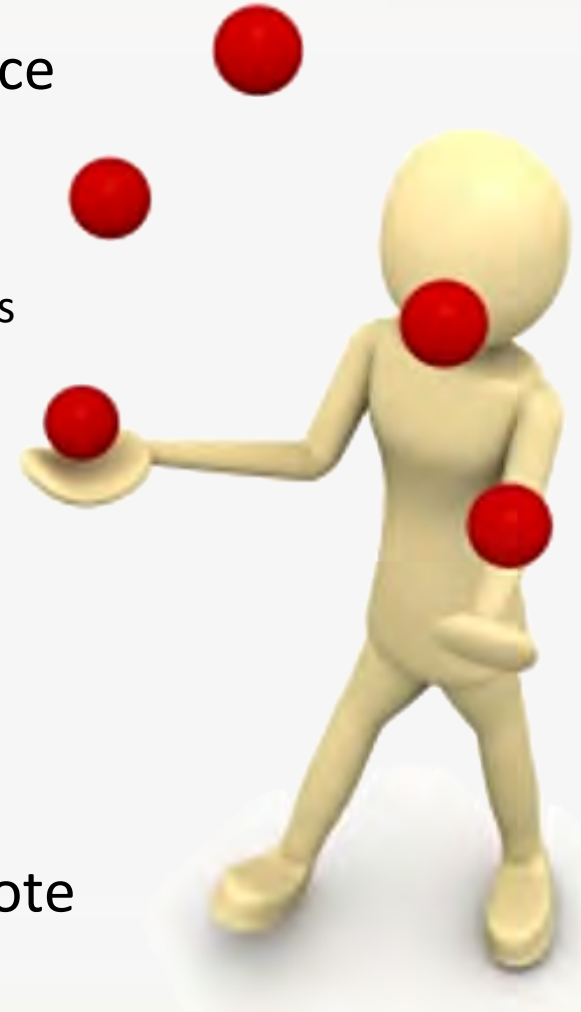


# GBN on Stage in British Columbia



# Juggling the Supply Chain

- ❑ Responsible for managing all material once collected
- ❑ Re-Engineer Infrastructure:
  - Receiving, Consolidation and Transfer Facilities (RCTs) - 31
  - Pre-Conditioning Facilities (PCFs) - 15
  - Container Recovery Facility (CRF) - 1
- ❑ Direct and Monitor Depot, Curbside, Multi-Family materials to preferred RCT, PCF or CRF
- ❑ Maximize recovery and efficiency, promote innovation while minimizing complexity.



# EPR Impacted BC Blue Box Business

## Re-Engineer Infrastructure

- Focus on doing only what makes sense around the province by eliminating redundant processes and procedures

## Fibre Sorting/ Quality

- All facilities separate fibre from containers/plastic
- Due to the composition change of the fibre mix, material can be sold as is with a limited sort.

## Engineered Plastics/Container Stream

- One Container/Plastic Stream
- PCFs sort out residue, glass and steel only - No skimming





# The Main Attraction

## Container Recovery Facility

- Utilizes the latest technology to maximize recovery of individual plastic resins
- Investment encouraged by knowing volume and inbound composition will be consistent
- Quality produced and overall recovery rates exceed 'traditional MRF' system
- Minimizes materials produced as 'mixed plastics'

# The Impact of *EPR* on CRI

## Cascades Recovery operates 6 processing facilities in BC – What has changed?

**PRO**

Standardized feedstock and output

**PRO**

Able to receive and manage a wider range of PPP with minimal investment

**PRO**

Addresses processing challenges

**PRO**

Controlled sort - focus is on executing the sort well

**PRO**

No Market Risk

**PRO**

Much higher levels of reporting and accountability



**GREEN**  
by Nature EPR®

# What's the Next Act?

*Focus on addressing  
contamination*



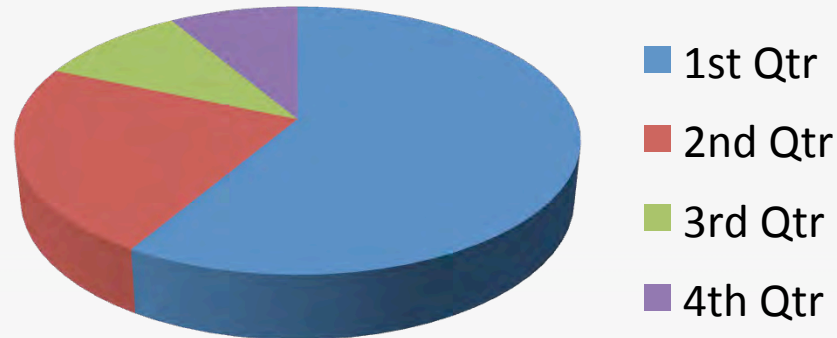
# What's the Next Act?

## *Mobile Order Management (M.O.M)*



# What's the Next Act?

## *Central audit center data analysis*



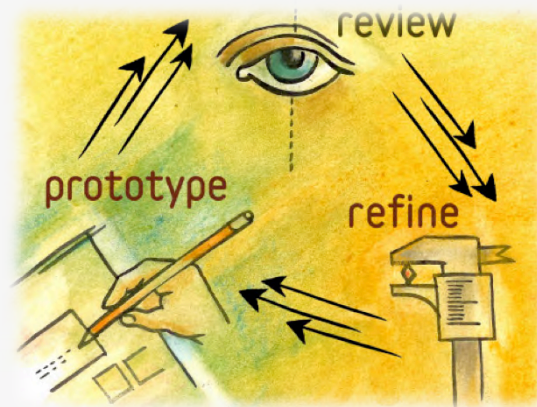
# What's the Next Act?

*Minimize transportation costs*



# What's the Next Act?

*Work closer with  
Stewards*



# What's the Next Act?

*Identify/develop new  
end markets*



**GREEN**  
by Nature EPR®



# What's the Next Act?

*Focus on adding  
materials*



# What's the Next Act?

*Implement on-the-fly  
improvements*



# Still Some Matters to Overcome...

1

The role of engineered fuel

2

A level playing field for all materials

3

Costing relative to services delivered

4

Advancing the value of EPR



# Don't Be Afraid of *EPR*....



**GREEN**  
by Nature EPR®



**GREEN**  
by Nature EPR®



**Al Metauro**

*President & CEO Green By Nature EPR*

*President & CEO Cascades Recovery Inc.*

**E: [ametauro@recoverycascades.com](mailto:ametauro@recoverycascades.com)**

***Thank You***



**Cascades Recovery Inc.**

---



**GREEN**  
**by Nature EPR®**

